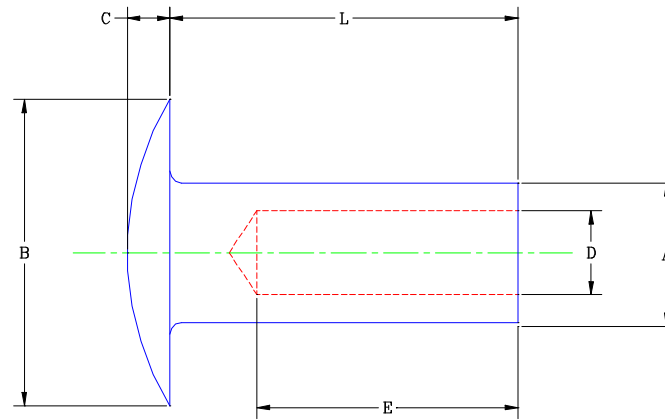


FULL TUBULAR RIVET STANDARD

BODY DIAMETER	9/64										
1018 STEEL	R-3339	R-3339	R-3339	R-3339	R-3295	R-3295	R-3295	R-3238	R-3334	R-3334	R-3334

CHICAGO RIVET & MACHINE CO.

L	3/16	4/16	5/16 to 6/16	7/16+	7/16	17/32 to 1-1/4	1-3/8+	1/2 to 3/4	3/16	4/16	9/32
A	.141 .146	.141 .146	.141 .146	.141 .146	.141 .146	.141 .146	.141 .146	.141 .146	.141 .146	.141 .146	.141 .146
B	.229 .239	.229 .239	.229 .239	.229 .239	.245 .255	.245 .255	.245 .255	.245 .255	.306 .318	.306 .318	.306 .318
C	.029 .035	.029 .035	.029 .035	.029 .035	.042 .050	.042 .050	.042 .050	.042 .050	.042 .050	.042 .050	.042 .050
D	.101	.101	.101	.101	.101	.101	.101	.101	.101	.101	.101
E	5/32	7/32	9/32	5/16	5/16	3/8	9/32	3/8	5/32	7/32	1/4

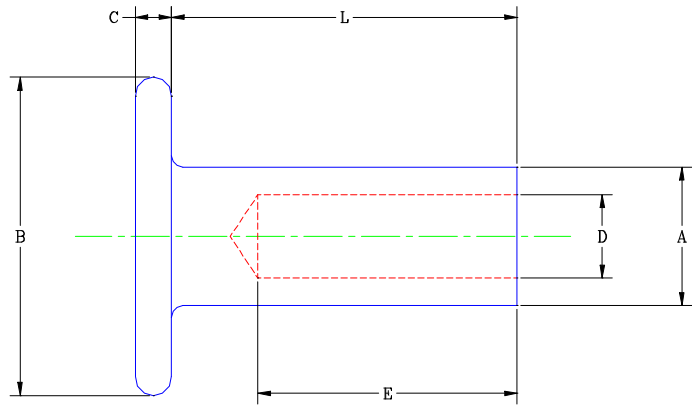


FULL TUBULAR RIVET STANDARD

BODY DIAMETER	9/64						3/16				
	1018 STEEL	R-3334	R-3334	R-3336	R-3336	R-3336	R-3336	R-3739	R-3739	R-3739	

CHICAGO RIVET & MACHINE CO.

L	5/16 to 6/16	7/16+	3/16	4/16	5/16 to 6/16	7/16+	1/4	5/16 to 6/16	7/16+		
A	.141 .146	.141 .146	.141 .146	.141 .146	.141 .146	.141 .146	.182 .188	.182 .188	.182 .188		
B	.306 .318	.306 .318	.367 .383	.367 .383	.367 .383	.367 .383	.367 .383	.367 .383	.367 .383		
C	.042 .050	.042 .050	.046 .054	.046 .054	.046 .054	.046 .054	.058 .068	.058 .068	.058 .068		
D	.101	.101	.101	.101	.101	.101	.136	.136	.136		
E	9/32	5/16	5/32	7/32	9/32	5/16	7/32	9/32	3/8		

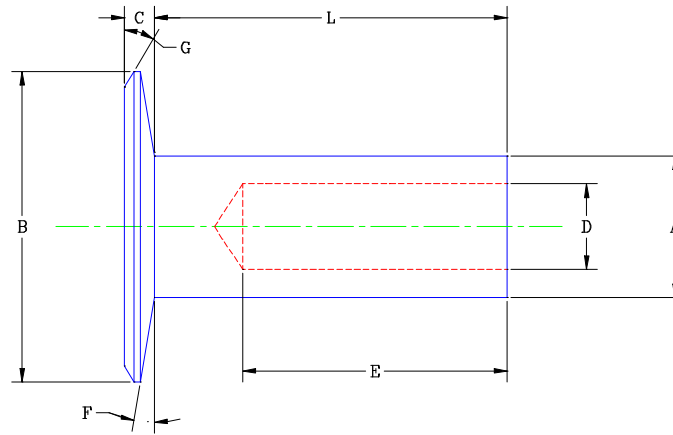


FULL TUBULAR RIVET STANDARD

BODY DIAMETER	9/64										
1018 STEEL	R-3528	R-3528	R-3528	R-3528							

CHICAGO RIVET & MACHINE CO.

L	3/16	4/16	5/16 to 6/16	7/16+							
A	.141 .146	.141 .146	.141 .146	.141 .146							
B	.321 .334	.321 .334	.321 .334	.321 .334							
C	.035 .045	.035 .045	.035 .045	.035 .045							
D	.101	.101	.101	.101							
E	5/32	7/32	9/32	5/16							

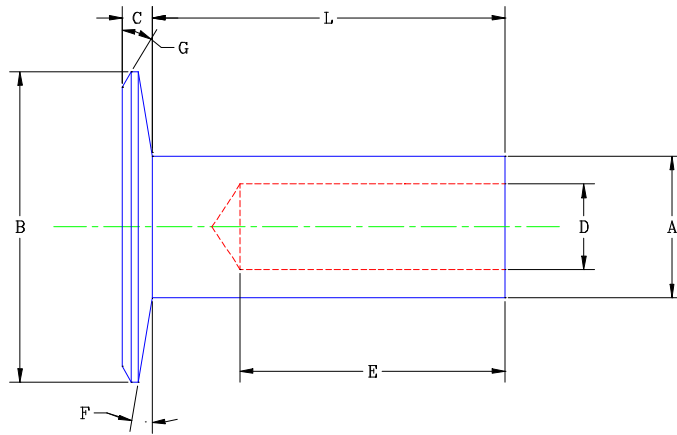


FULL TUBULAR RIVET STANDARD

BODY DIAMETER	9/64										
1018 STEEL	R-1	R-1	R-1	R-1	R-1001	R-1001	R-1001	R-1001	R-3267	R-3335	R-3335

CHICAGO RIVET & MACHINE CO.

L	3/16	4/16 to 5/16	6/16	7/16+	3/16	1/4	5/16 to 6/16	7/16+	5/16	3/16	4/16
A	.141 .146	.141 .146	.141 .146	.141 .146	.141 .146	.141 .146	.141 .146	.141 .146	.141 .146	.141 .146	.141 .146
B	.306 .318	.306 .318	.306 .318	.306 .318	.306 .318	.306 .318	.306 .318	.306 .318	.306 .318	.367 .383	.367 .383
C	.032 .040	.032 .040	.032 .040	.032 .040	.035 .045	.035 .045	.035 .045	.035 .045	.046 .054	.046 .054	.046 .054
D	.101	.101	.101	.101	.104	.104	.104	.104	.104	.101	.101
E	5/32	7/32	9/32	5/16	5/32	7/32	9/32	5/16	9/32	5/32	7/32
F	10 Deg.	10 Deg.	10 Deg.	10 Deg.	10 Deg.	10 Deg.	10 Deg.	10 Deg.	10 Deg.	18 Deg.	10 Deg.
G	20 Deg.	20 Deg.	20 Deg.	20 Deg.	20 Deg.	20 Deg.	20 Deg.	20 Deg.	20 Deg.	10 Deg.	20 Deg.



FULL TUBULAR RIVET STANDARD

BODY DIAMETER	9/64		3/16							
	1018 STEEL	R-3335	R-3335	R-3713 & #3 Harness	R-3713 & #3 Harness	R-3713 & #3 Harness	R-3713 & #3 Harness	R-3341	R-3341	R-3341

CHICAGO RIVET & MACHINE CO.

L	5/16 to 6/16	7/16+	3/16	4/16	5/16 to 6/16	7/16+	3/16	4/16	5/16 to 6/16	7/16+
A	.141 .146	.141 .146	.182 .188	.182 .188	.182 .188	.182 .188	.182 .188	.182 .188	.182 .188	.182 .188
B	.367 .383	.367 .383	.351 .367	.351 .367	.351 .367	.351 .367	.430 .444	.430 .444	.430 .444	.430 .444
C	.046 .054	.046 .054	.042 .050	.042 .050	.042 .050	.042 .050	.058 .068	.058 .068	.058 .068	.058 .068
D	.101	.101	.136	.136	.136	.136	.136	.136	.136	.136
E	9/32	5/16	5/32	7/32	9/32	11/32	5/32	7/32	9/32	11/32
F	10 Deg.	10 Deg.	15 Deg.	15 Deg.	15 Deg.	15 Deg.	10 Deg.	10 Deg.	10 Deg.	10 Deg.
G	20 Deg.	20 Deg.	20 Deg.	20 Deg.	20 Deg.	20 Deg.	20 Deg.	20 Deg.	20 Deg.	20 Deg.

BINDER RIVET

R3315

FEATURES

- Standard lengths of 4/16" through 9/16" in increments of 1/16" are available **from stock** for **immediate delivery**.
- 3 Quality Stock Finishes to choose from:
 - **Nickel Plate**
 - **Black Oxide** with a protective light wax finish
 - **Highly Durable White Urethane Enameled Head** over zinc plating.
- All parts are **100% visually inspected** to assure that you receive defect-free parts resulting in no downtime for your rivet setters.
- All rivets are manufactured from **C1008 Steel** along with a 7/32" hole depth to help pierce your toughest applications.
- Stock programs for custom rivets and special finishes and colors are available.
- Chicago Rivet and Machine Co. is an **ISO 9002** and **QS 9000** Registered Company.

